

# *Shuffle Along*



ORCHESTRA SCORE

*of*

“SHUFFLE ALONG”

*by*

SISSLE and BLAKE

## *Shuffle Along*

**Flute, Oboe, Clarinet, 1st & 2nd Cornet,  
Trombone,**

**Drums & Bells, 1st & 2nd Violin,**

**Viola, Cello, Bass, Piano & Vocal/Chords**

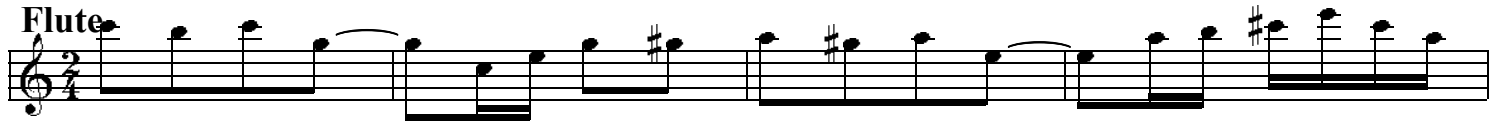
***Re-edited by Klaus Pehl © 2022***

# "Shuffle Along"

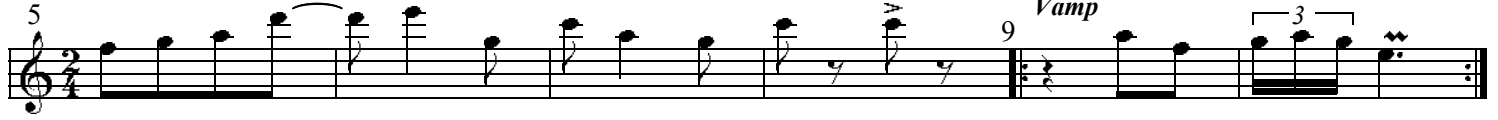
Music by Eubie Blake

♩ = 112

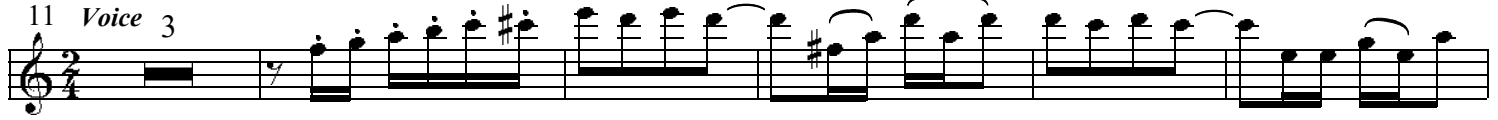
Flute



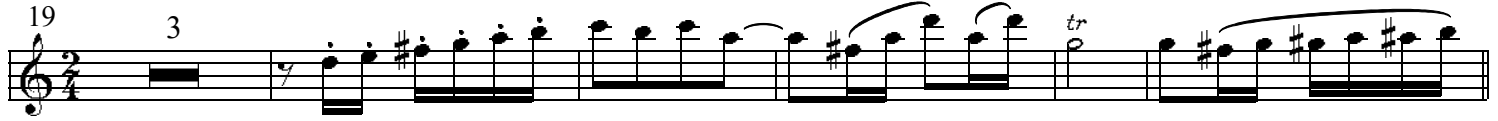
5 *Vamp*



11 *Voice* 3



19 3 *tr*



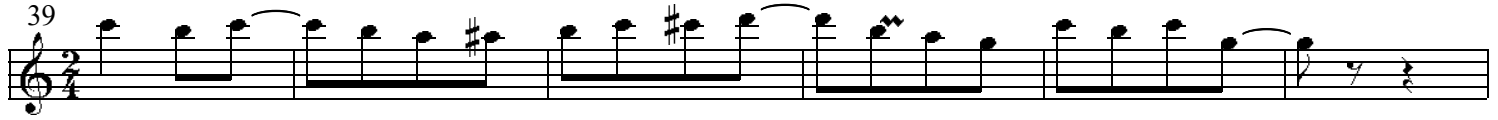
27 *Chorus*



33 1



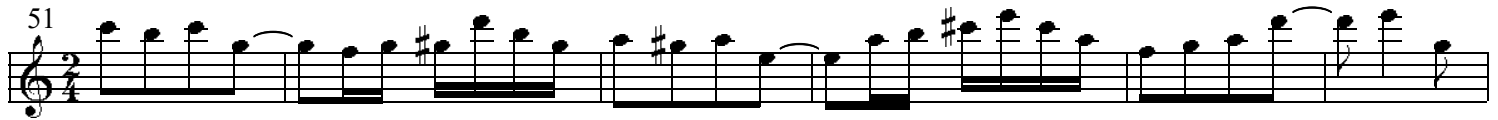
39



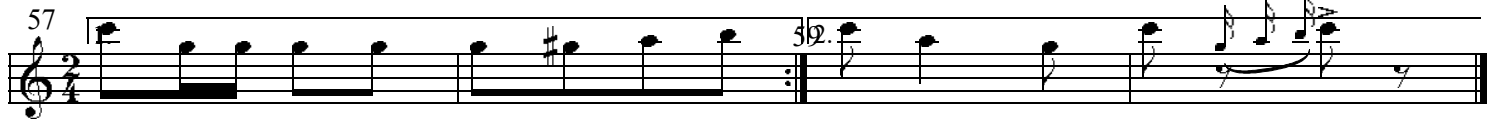
45 1



51



57



61 *Encore*



*D.S. Chorus*

# "Shuffle Along"

Music by Eubie Blake

♩ = 112

Oboe

7

11 4 4

23

27 1

33 1

39

45 1 1

51

57 1. 32.

61 *Encore* 62

*D.S. Chorus*

# "Shuffle Along"

Music by Eubie Blake

♩ = 112

1st Clar.

5

11

15

19

23

27

33

39

45

51

57

61 *Encore* 62

# "Shuffle Along"

Music by Eubie Blake

♩ = 112

## 1st Cornet

7 9 11 13 2 11 3

15 17 3

23

27 1

33 1

39

45 1 1

51

57 1. 59. 2.

61 *Encore* 62

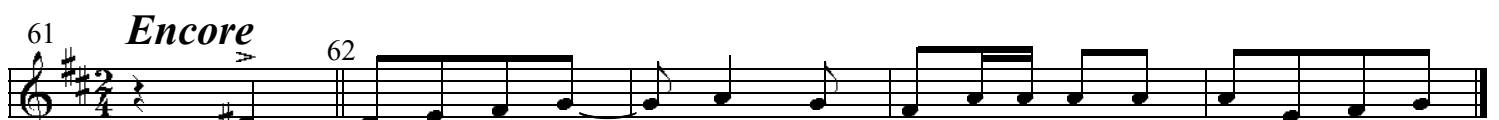
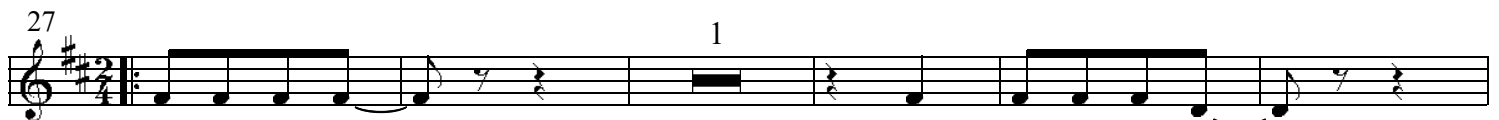
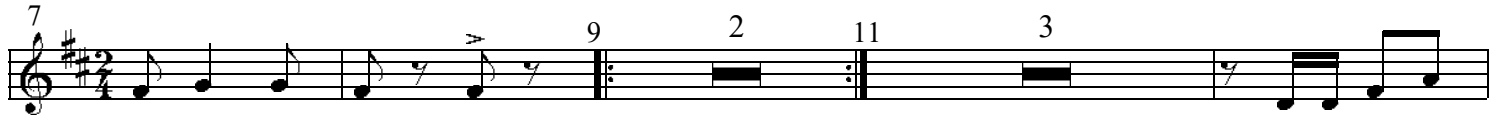
D.S. *Chorus*

# "Shuffle Along"

Music by Eubie Blake

♩ = 112

## 2nd Cornet



## Encore

*D.S. Chorus*

♩=112

# "Shuffle Along"

Music by Eubie Blake

## Trombone 1&2

First staff of music for Trombone 1&2, measures 1-6. The key signature has one sharp (F#) and the time signature is 2/4. The melody consists of eighth and quarter notes.

Second staff of music, measures 7-11. Measure 7 starts with a fermata. Measures 9, 11, and 12 contain rests. Measure 10 has a repeat sign.

Third staff of music, measures 15-19. Measure 19 contains a rest.

Fourth staff of music, measures 23-27. Measure 27 contains a rest.

Fifth staff of music, measures 31-36. Measure 32 contains a rest.

Sixth staff of music, measures 37-42. The melody continues with eighth and quarter notes.

Seventh staff of music, measures 43-48. Measure 44 contains a rest.

Eighth staff of music, measures 49-54. Measure 49 contains a rest.

Ninth staff of music, measures 55-60. Measure 59 contains a repeat sign.

Tenth staff of music, measures 61-66. Measure 61 is marked with an accent. Measure 62 is marked with an accent. The staff ends with a double bar line.

*Encore*

*D.S. Chorus*

♩ = 112

# "Shuffle Along"

Music by Eubie Blake

## Drums

The drum score is written on a grand staff with two staves per system. The time signature is 2/4. The piece begins with a 4-measure introduction. The first system (measures 1-8) features a steady eighth-note pattern on the snare and bass drum. The second system (measures 9-16) includes a 2-measure rest for the snare and a 3-measure rest for the bass drum. The third system (measures 17-24) continues the eighth-note pattern. The fourth system (measures 25-30) is marked "Solo Woodblock" and features a woodblock solo. The fifth system (measures 31-36) is also marked "Solo Woodblock". The sixth system (measures 37-42) continues the eighth-note pattern. The seventh system (measures 43-46) is marked "Solo Woodblock". The eighth system (measures 47-50) continues the eighth-note pattern. The ninth system (measures 51-54) continues the eighth-note pattern. The tenth system (measures 55-60) includes a first ending (1.) and a second ending (2.). The eleventh system (measures 61-62) is marked "Encore" and features a woodblock solo. The piece concludes with the instruction "D.S. Chorus".



♩=112

# "Shuffle Along"

Music by Eubie Blake

## 1st Violin

5

11

15

19

23

27

33

39

45

51

57

61 *Encore*

62

# "Shuffle Along"

Music by Eubie Blake

♩ = 112

## 2nd Violin

5

11

15

19

23

27

33

39

45

51

57

61 *Encore*

62

*D.S. Chorus*

♩=112

# "Shuffle Along"

Music by Eubie Blake

## Viola

5

11

15

19

23

27

33

39

45

51

57

61

62

*Encore*

*D.S. Chorus*

♩=112

# "Shuffle Along"

Music by Eubie Blake

Violoncello

5

9

11

15

19

23

27

33

39

45

51

57

61 *Encore*

62

*D.S. Chorus*

# "Shuffle Along"

Music by Eubie Blake

♩ = 112

## Bass

## Encore

D.S. Chorus

# "Shuffle Along"

Music by Eubie Blake

♩ = 112

Piano *acc.*

5

9

11

15

19

23

27

1

1

33

1

1

39

1

45

1

1

51

1

57

1.

2.

61 *Encore*

62

D.S. *Chorus*

♩ = 112

# "Shuffle Along"

Music by Eubie Blake

**Vocal** *Instrumental* *Intro*

11 *Voice*

Ev-ry one in town is al-ways sing-ing this song,-

15

Shuf- fle a- long, Shuf- fle a- long,

19

Doc- tors, ba- kers, un- der- ta- kers, do a step -

23

That's full of "pep" - and syn- co- pa- tion.

27 *Refrain*

Shuf- fle a- long - Oh,

31

shuf- fle a- long - Why,

35

life's but a chance And when times come to choose -

39

If you lose - don't start a sing- ing the blues - But just you

43

shuf- fle a- long And



47  
whis- tle a song. - Why,

51  
some- times a smile will right ev- 'ry wrong Keep

55  
smil- ing and shuf- fle a- long

59 |2. *Encore Instrumental* 61 62

63  
D.S. Chorus

♩ = 112

# "Shuffle Along"

Music by Eubie Blake

Chords

Chords: C C E<sup>7</sup> A<sup>7</sup> A<sup>7</sup>

5 D<sup>m</sup> G<sup>7</sup> C D<sup>m</sup> G<sup>7</sup> C<sup>9</sup> C

11 C C C C

15 D D G C

19 C C C<sup>6</sup> G D G G<sup>7</sup>

23 D D G<sup>7</sup> G<sup>7</sup>

27 C C 1 B<sup>0</sup>

31 A<sup>m</sup> C<sup>+</sup> A<sup>m</sup> 1 C<sup>#0</sup>

35 D<sup>m</sup> C D<sup>m</sup> G<sup>9</sup> A<sup>m</sup> D<sup>m</sup> C C

39 D D G<sup>6</sup> D G<sup>0</sup> G<sup>7</sup>

43 C C 1 A<sup>7</sup>

47 **Dm<sup>7</sup>** **A<sup>7</sup>** **Dm<sup>7</sup>** **G<sup>7</sup>**

51 **C** **C** **A<sup>7</sup>** **A<sup>7</sup>**

55 **Dm<sup>7</sup>** **G<sup>7</sup>** **G<sup>7</sup>** **C<sup>7</sup>** **G<sup>7</sup>** **D<sub>0</sub>** **Am** **G<sup>7</sup>**

59 **Dm<sup>7</sup>** **G<sup>7</sup>** **C** **C<sup>#m</sup>** **F** **G<sup>7</sup>**

63 **C** **G<sup>7</sup>** **G<sup>7</sup>** **D<sub>0</sub>** **Am** **G<sup>7</sup>**

# Shuffle Along



ORCHESTRA SCORE

of

“SHUFFLE ALONG”

by

SISSLE and BLAKE

Act I: 1. Overture, 2. Opening Chorus - Election Day, 3. I'm Just Simply Full Of Jazz, 4. Love Will Find A Way, 5. Bandana Days, 6. Encore - Bandana Days, 7. Uncle Tom and Old Black Joe, 8. In Honeyuckle Time, 9. Gipsy Blues, 10. Humph Music, 11. Finale - Act I, 11b. Finale - Act I Reprise „Love Will ...”.

Act II: 12. Shuffle Along, 13. I'm Just Wild About Harry, 14. Sing Me to Sleep, Dear Mammy, 15. Everything Reminds Me Of You, 16. If You've Never Been Yamped By A Brown Skin, 17. Oriental Blues, 18. I'm Craving For That Kind Of Love, 19. Serenade Blues, 19b. Serenade Blues - tb-solo, 20. Sissle & Blake Entrance, 21. Baltimore

**BUZZ**

*Re-edited by Klaus Pehl © 2022*