

# *Vocal*

## **Noble Sissle & His Orchestra**

**New York, February 10, 1938**



**Voices for:**

**Sopranosax/Clarinet, 1st & 2nd Altosax,  
Tenorsax, 1st & 2nd Trumpet, Trombone,  
Guitar, Bass, Piano, Drums (& Vocal)**

**Transcription by Klaus Pehl 1995 © 2024**

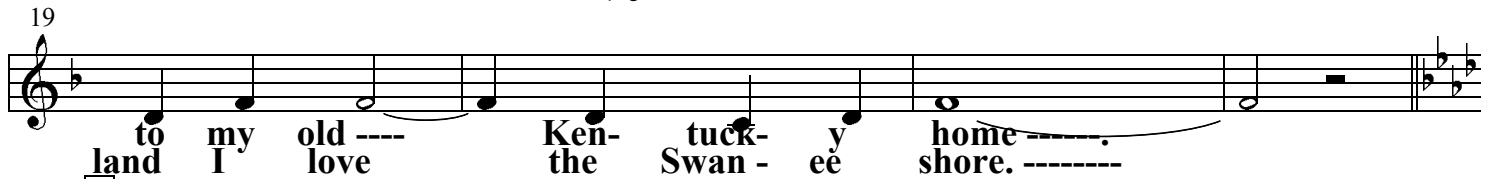
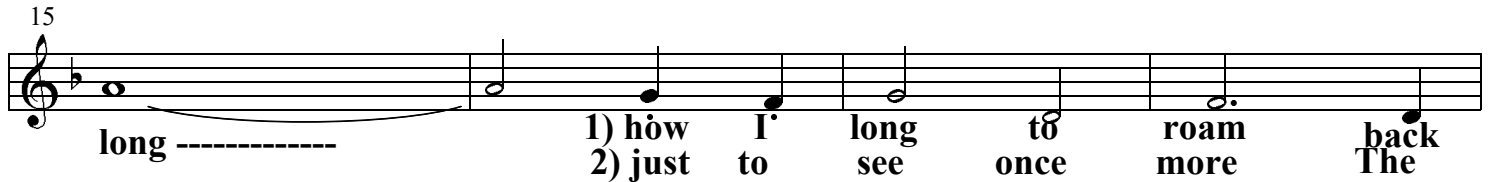
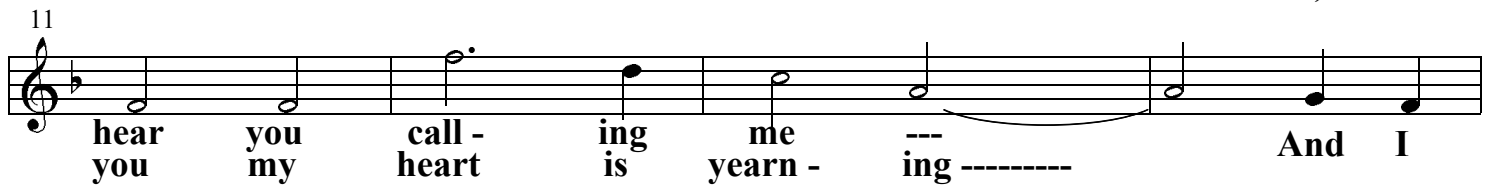
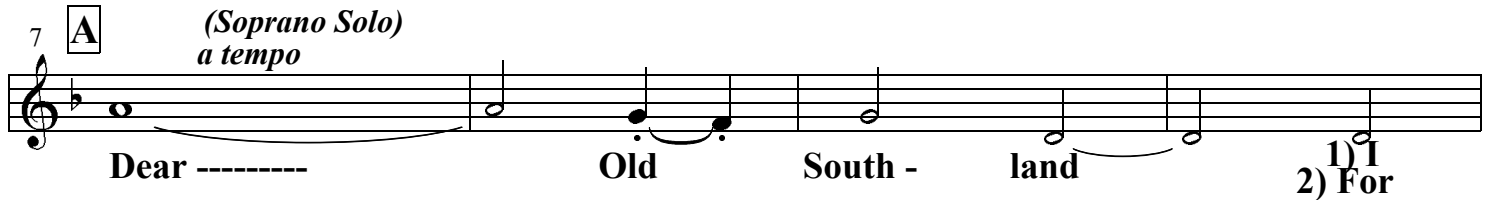
# Dear Old Southland

Noble Sissle & His Jazzopators 14.7.1937

Creamer & Leyton 1921  
Transcr. Klaus Pehl 1995

$\text{♩} = 100$

Vocal (opt.) Introduction Sopransax ad lib Solo




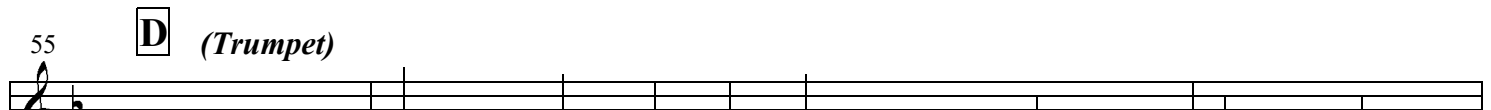
43  

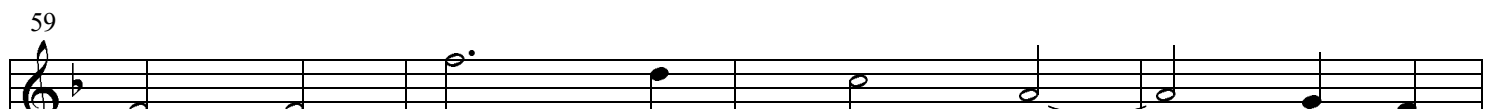
 I want to see ---- Mam- my Jin- ny so dear! love her, Be- cause I ough-ta.


47  

 I want to hear ---- Pick- a- nin- nies in tune, ----

51  

 Sing- ing 'go- long', 'go- long', 'go- long', 'go- long', yo' mule! ----

55 **D** (*Trumpet*)  

 Dear Old South- land ---- I

59  

 hear you call- ling me. ----- And I

63  

 long ----- How I long to roam back

67  

 to my old Ken- tuck- y home. -----

71 **E** *Soprano*  


75  


79  


83  

 2



# Loveless Love

*Noble Sissle & His Orchestra, New York 24. Feb. 1931*

W. C. Handy 1921  
Transcr. Klaus Pehl 1995

$\text{♩} = 172$

**Vocal** 1 6 7 **A** *Reeds* 16 23 **B** *Brass* 16

39 **C** **Vocal** *Vocal (Nobles Sissle's lyrics, Handy 1931)*

Love, oh love, oh love - less love, --- Has

43

set our hearts on goal - less goals. ---

47

Milk- less milk and silk - less silk, We're

51

go- ing used to soul- less souls.

55 **D** *Trumpet Solo* 14 69 **E** *Modulation* 4 73 **F** *Verse* 12

85 **G** *Clarinet Solo* 14 99 **H** *Modulation* 4

103 **J** *tutti* 16 119 **K** *Soprona & Ens.* 14 133 **Coda** 4

# Viper Mad

*Noble Sissle's Swingsters 10.2.1938*

$\text{♩} = 184$

S. Bechet, Rousseau Simmons 1924  
transcr. Klaus Pehl 1995

**Vocal** 4 **A** *Soprano* 32 37 1

38 **B** *Vocal*

Just vi - per mad, must have my fun,

42 I'll nev - er say it can't be done.

46 The peo - ple are talk - in' but I don't care

49 I'm twen - ty - one far from done I'm just be - gun.

53 wrap your charms 'round this stink of tea.

58 love this game, and get high with me, good

62 tea is my weak - ness, I know it's bad

66 it sends me gay and I can't wait, I'm vi - per mad.

70 1 **C** *Trumpet* 32 103 **D** *Soprano* 15

118 *Vocal* 119



wrap your charms 'round this stink of tea.

Detailed description: This block contains the first two lines of musical notation. The first line starts at measure 118 with a treble clef, a key signature of two flats (B-flat and E-flat), and a common time signature. The melody begins with a whole rest, followed by quarter notes G4, A4, and B4. A double bar line occurs after measure 118. Measure 119 begins with a quarter rest, followed by quarter notes G4, A4, and B4, then a quarter note G4 with a slur over it, and finally a quarter note F4. The lyrics are aligned under the notes.

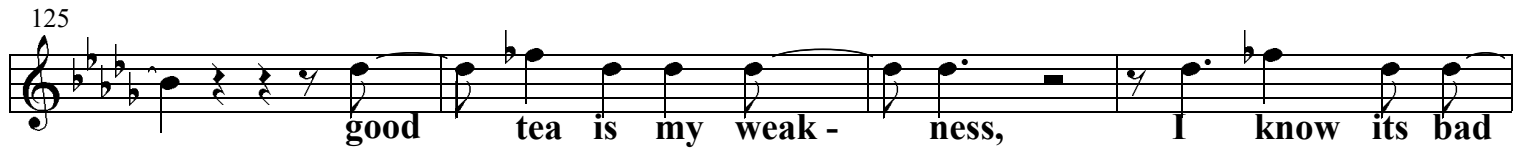
121



Come on blow this game, and get high with me,

Detailed description: This block contains the second line of musical notation, starting at measure 121. The melody continues with quarter notes G4, A4, and B4, followed by a quarter note G4 with a slur over it, and a quarter note F4. The lyrics are aligned under the notes.

125



good tea is my weak - ness, I know its bad

Detailed description: This block contains the third line of musical notation, starting at measure 125. The melody continues with quarter notes G4, A4, and B4, followed by a quarter note G4 with a slur over it, and a quarter note F4. The lyrics are aligned under the notes.

129



it sends me gay and I can't wait, I'm vi - per mad.

Detailed description: This block contains the fourth line of musical notation, starting at measure 129. The melody continues with quarter notes G4, A4, and B4, followed by a quarter note G4 with a slur over it, and a quarter note F4. The lyrics are aligned under the notes.

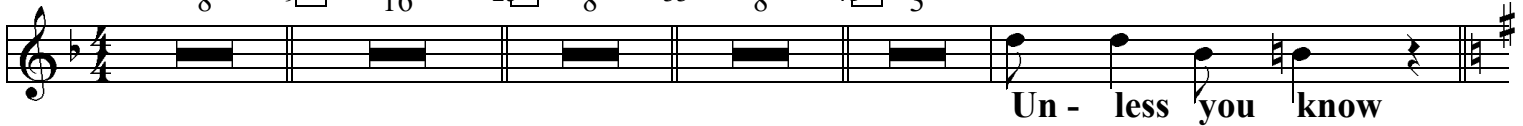
1  
**You Can't Live In Harlem**  
*Noble Sissle & His Int. Orchestra 15.8.1934*

Sammy Cahn - Saul Chaplin 193?  
transcr. Klaus Pehl 1995

 =220

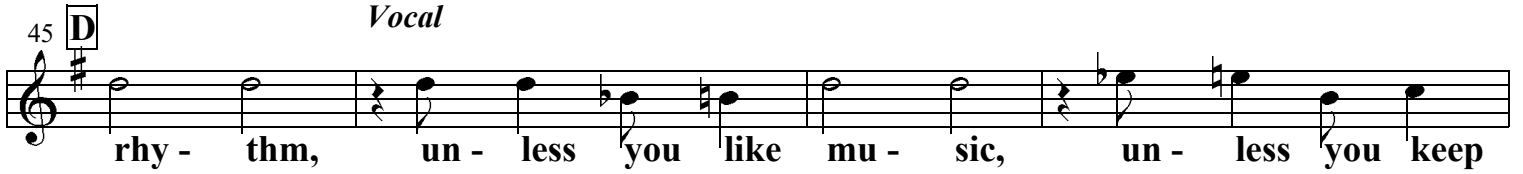
Vocal

8 9 **A** ensemble 16 25 **B** ensemble 33 8 4 **C** 3



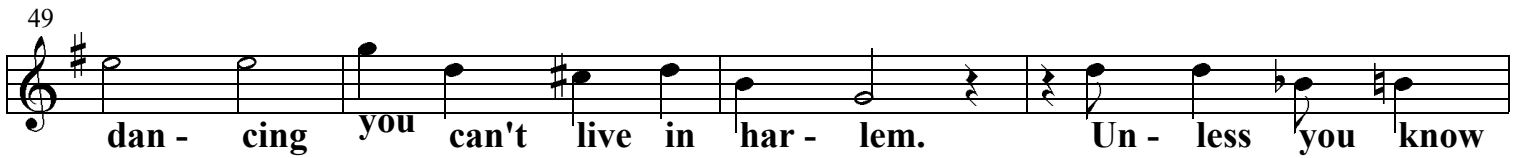
Un - less you know

45 **D** *Vocal*



rhy - thm, un - less you like mu - sic, un - less you keep

49



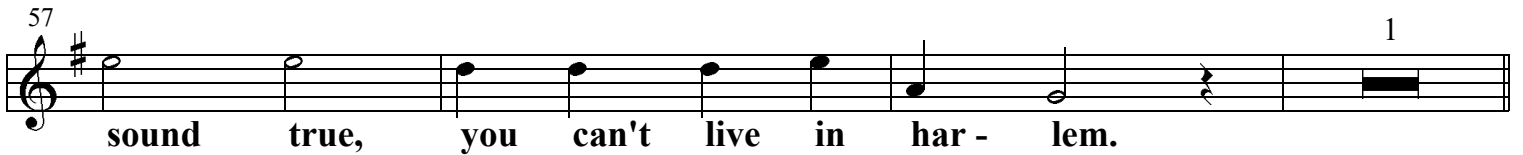
dan - cing you can't live in har - lem. Un - less you know

53



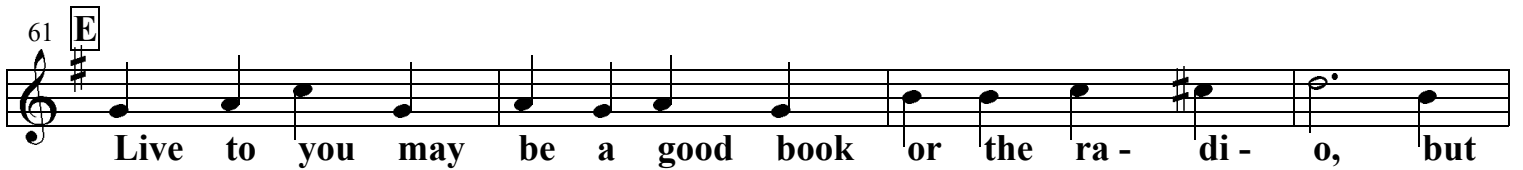
girls who give kis - ses like girls do, and tell lies that

57



sound true, you can't live in har - lem. 1

61 **E**



Live to you may be a good book or the ra - di - o, but

65



once you swing in har - lem you learn things the books don't know. Un - less you know

69



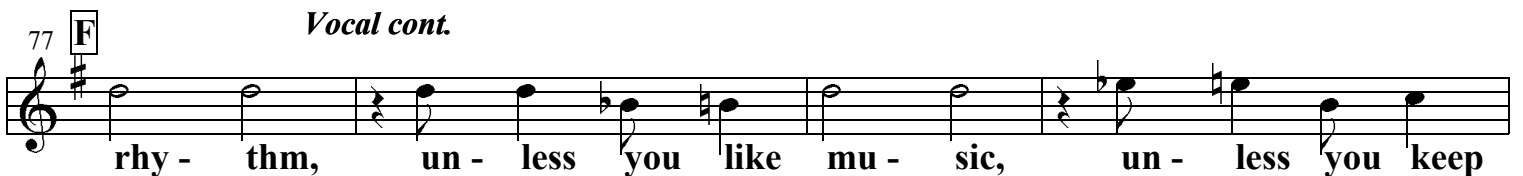
rhy - thm, un - less you like dan - cing, un - less you like

73




mu - sic now you can't live in har - lem. Un - less you know

77 **F** *Vocal cont.*

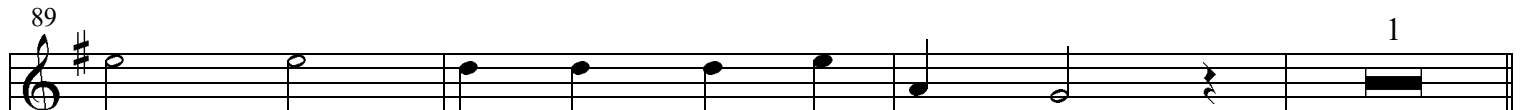


rhy - thm, un - less you like mu - sic, un - less you keep




81  dan - cing you can't live in har - lem. Un - less you know


85  girls who give kis - ses like girls do, and tell lies that

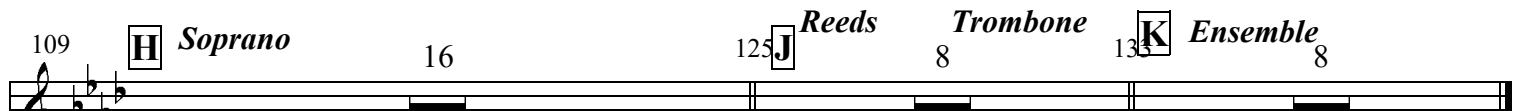
89  sound true, you can't live in har - lem. 1

93  Live to you may be a good book or the ra - di - o, but

97  once you swing in har - lem you learn things the books don't know. Un - less you know

101  rhy - thm, un - less you like dan - cing, un - less you like

105  mu - sic now you can't live in har - lem. 1

109  **H** *Soprano* 16 *Reeds* **J** 125 *Trombone* 8 **K** *Ensemble* 133 8

# **Noble Sissle & His Orchestra feat. Sidney Bechet**

**Transcription by Klaus Pehl 1995**



## **Parts for:**

**Vocal  
Sopranosax/Clarinet  
1st Altosax  
2nd Altosax  
Tenorsax  
Guitar**

**Bass  
1st Trumpet  
2nd Trumpet  
Trombone  
Piano  
Drums**